



RECYCLING, REUSE, & ZERO WASTE INITIATIVES

Protecting our planet through sustainable
practices for future generations



March 6, 2025





ABOUT US

Tri-State Area (NY, NJ, PA, CT)

Renewable Recycling, Inc. is a NYS, NYC NY/NJ Port Authority, Woman-Owned Business Enterprise (WBE) and DEC Registered Solid Waste Recycling Facility.

Renewable Recycling, Inc. partners with a plethora of organizations in diverse industries across the East Coast, to implement comprehensive Recycle/Reuse programs to put an end to the needless dumping of Municipal Solid Waste (MSW) into landfills.

Renewable Recycling Inc. provides critical Sustainability Reports through its unique recycling process that details tonnage diversion for each textile we process for our clients.

Renewable Recycling, Inc. has created and made available, unique Re-Use products manufactured with up to 70% of recycled textiles!

Renewable Recycling, Inc.'s founding President, Christine Kiourtsis is an active member of NYSAR3, NYS's Premiere ReCycle, ReThink, ReUse Organization, working toward progressive legislative initiatives.

Together We Make A Difference!





IT ALL STARTED WITH MATTRESSES: THE 'ACHILLES HEEL' OF SOLID WASTE



WHY MATTRESSES? ...

A single mattress can take up to 100 years to fully decompose, creating a massive carbon footprint

- Fuel & greenhouse gas emissions during transport
- Absorption of hazardous materials
- Decomposition & release of toxic chemicals

Mattresses are difficult to condense & account for a significant amount of space in sanitation trucks & containers

- Metal springs can cause damage to compression machines



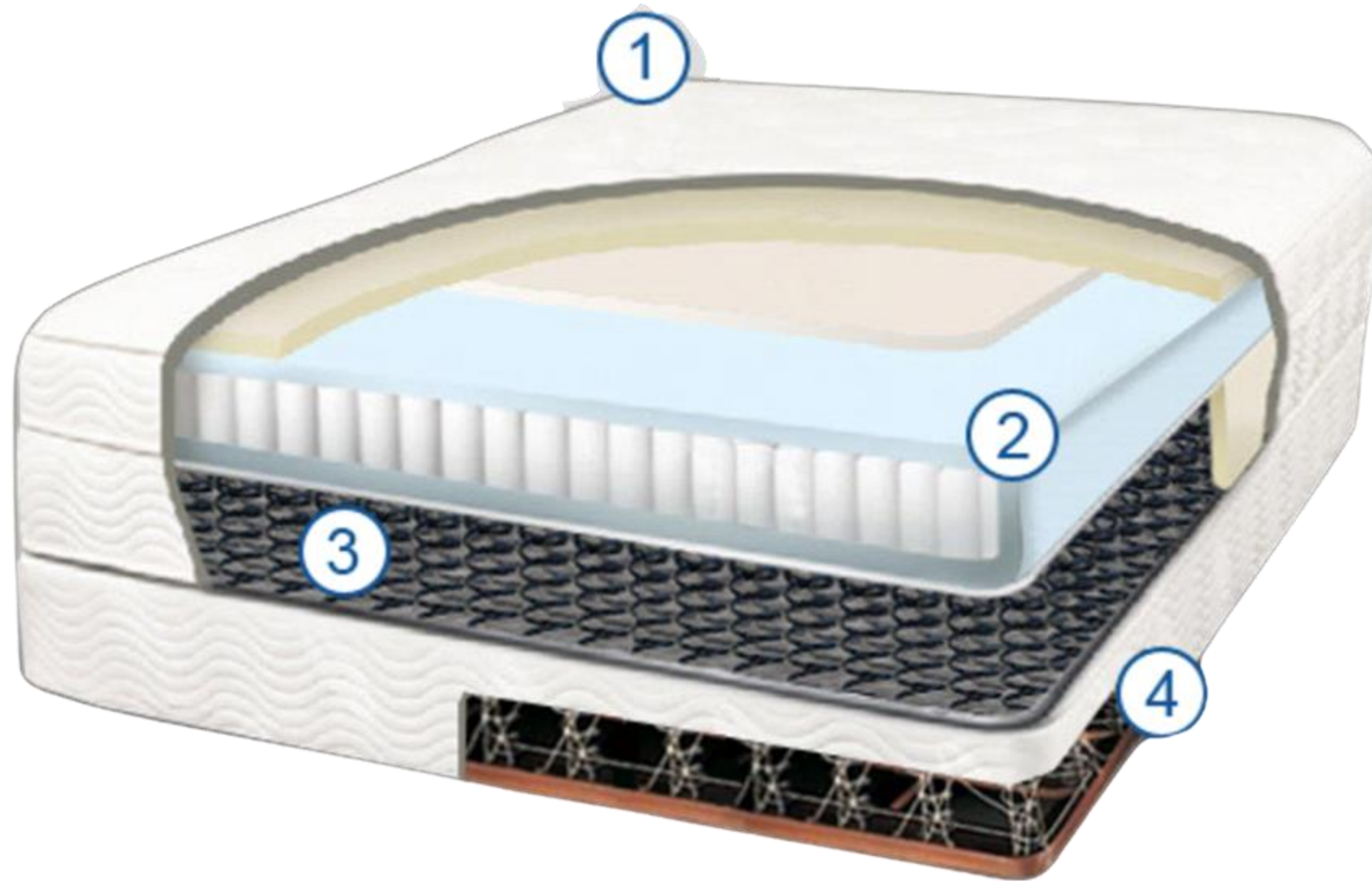
THE HARSH STATISTICS OF MATTRESS LANDFILLING

TOTAL NUMBER OF MATTRESSES DUMPED INTO US LANDFILLS

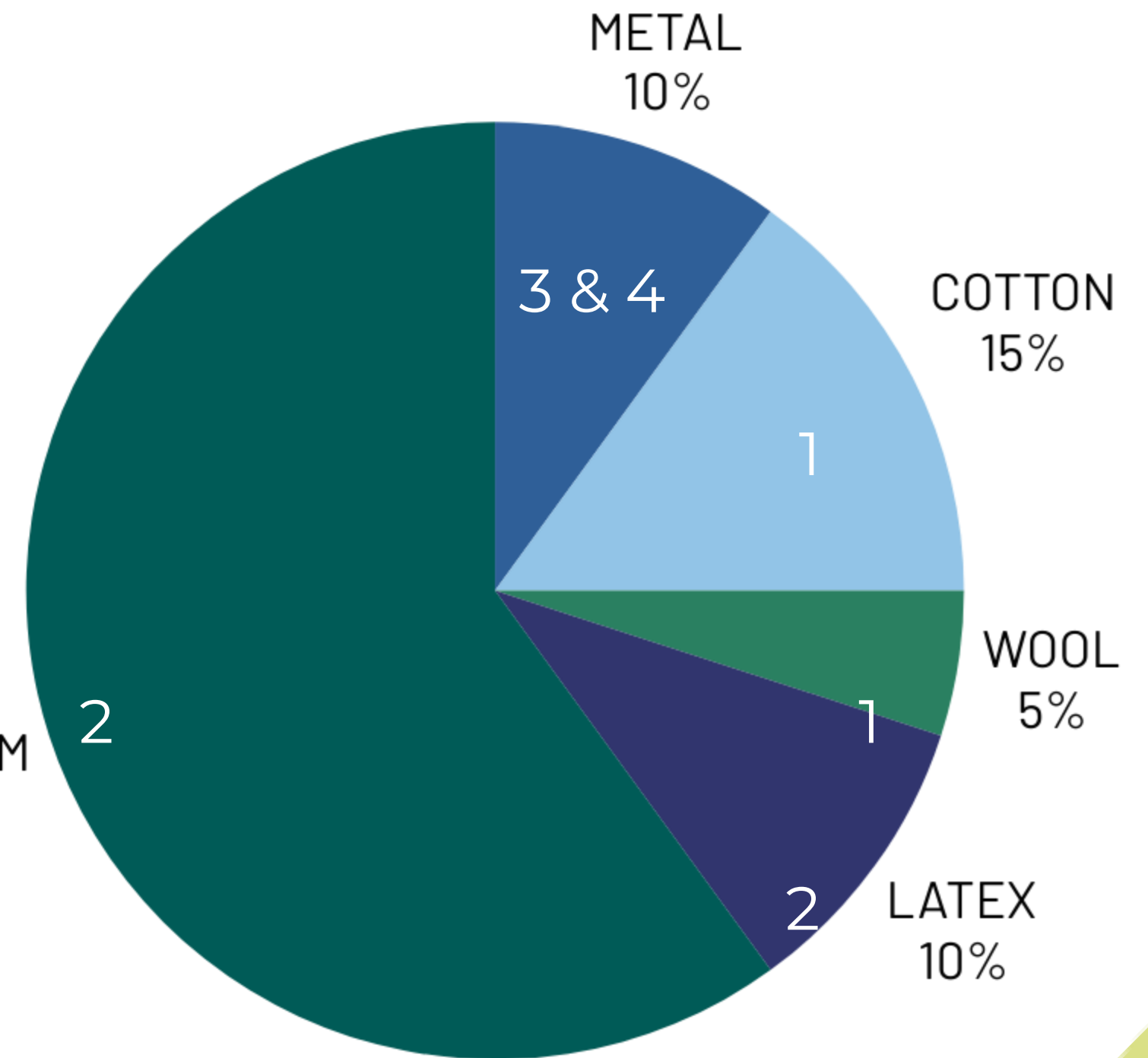
OVER 55,000 UNITS OR 27.5 TONS PER DAY

OVER 21 MILLION UNITS OR 10,500 TONS PER YEAR

MATTRESS SIZE	WEIGHT	VOLUME
TWIN	40-75 LBS	20-27 CUBIC FT
FULL	50-90 LBS	34-40 CUBIC FT
QUEEN	120-200 LBS	42-50 CUBIC FT
KING	130-280 LBS	55-65 CUBIC FT



POLYFOAM
60%



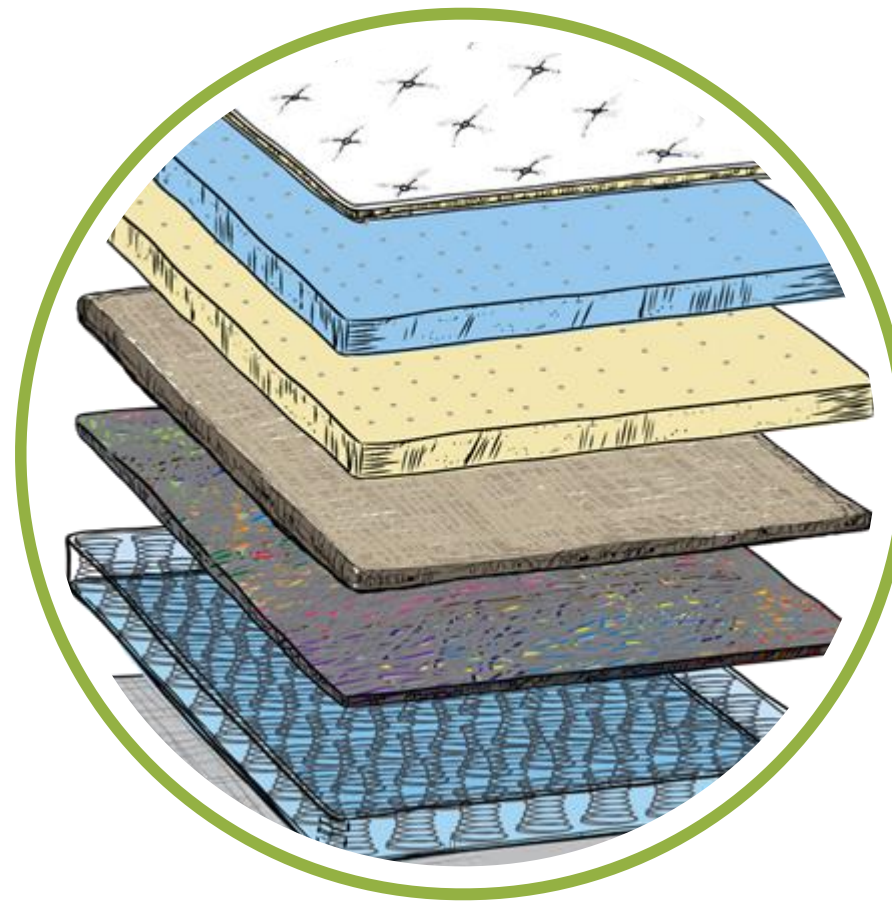
TEXTILES INSIDE OF MATTRESSES



RECYCLING PROGRAM



**EFFICIENT
COLLECTION**



**90% OF MATERIALS
ARE REPURPOSED**



**REDUCE CARBON FOOTPRINT
+
ADD TO ELECTRIC ENERGY GRID**



RRI INDUSTRY PARTNERSHIPS **for Mattress + Textile Recycling Programs**

RRI's Diverse Partnerships Cover A Gamut of Diverse Industries.

Each Has A Common Goal: *Handling Municipal Solid Waste and Finding Responsible Means of Handling & Disposal*

- Municipalities
- Hotels
- Waste Haulers/Transfer Stations
- Building Owners/Property Management Companies: Public & Private
- Design & Build: Architects, Demolition Teams, Building Developers
- Mattress & Furniture Companies/Wholesale & Retail
- Universities/Military Campuses



SUSTAINABILITY PARTNERSHIPS

Mattress Companies . Waste Haulers . Hotels . Architects .
Property Management Companies

SHOVLIN
MATTRESS



roomie

silk &
snow



AECOM

Casper

The
JUNKLuggers®



TAJ



R&B



FORDHAM UNIVERSITY
THE JESUIT UNIVERSITY OF NEW YORK

Marriott®



SELECT Express &
Logistics
Expect More

Stony Brook
University



ROYAL
Waste Services, Inc.



Hilton
Garden Inn™





MUNICIPALITY PARTNERSHIPS

2024 STATISTICS

Incorporated Village of Lynbrook, NY

63.01 tons

Incorporated Village of Island Park, NY

21.55 tons collected!

The City of Long Beach, NY

38.2 tons collected

The Town of Hempstead, NY

28.8 tons collected

Township of Westfield, NJ

13.28 tons collected!

Burlington County, NJ

63.16 tons collected

Township of Old Bridge, NJ

16.12 tons collected!

Atlantic County Utilities Authority, NJ

7.39 tons collected!

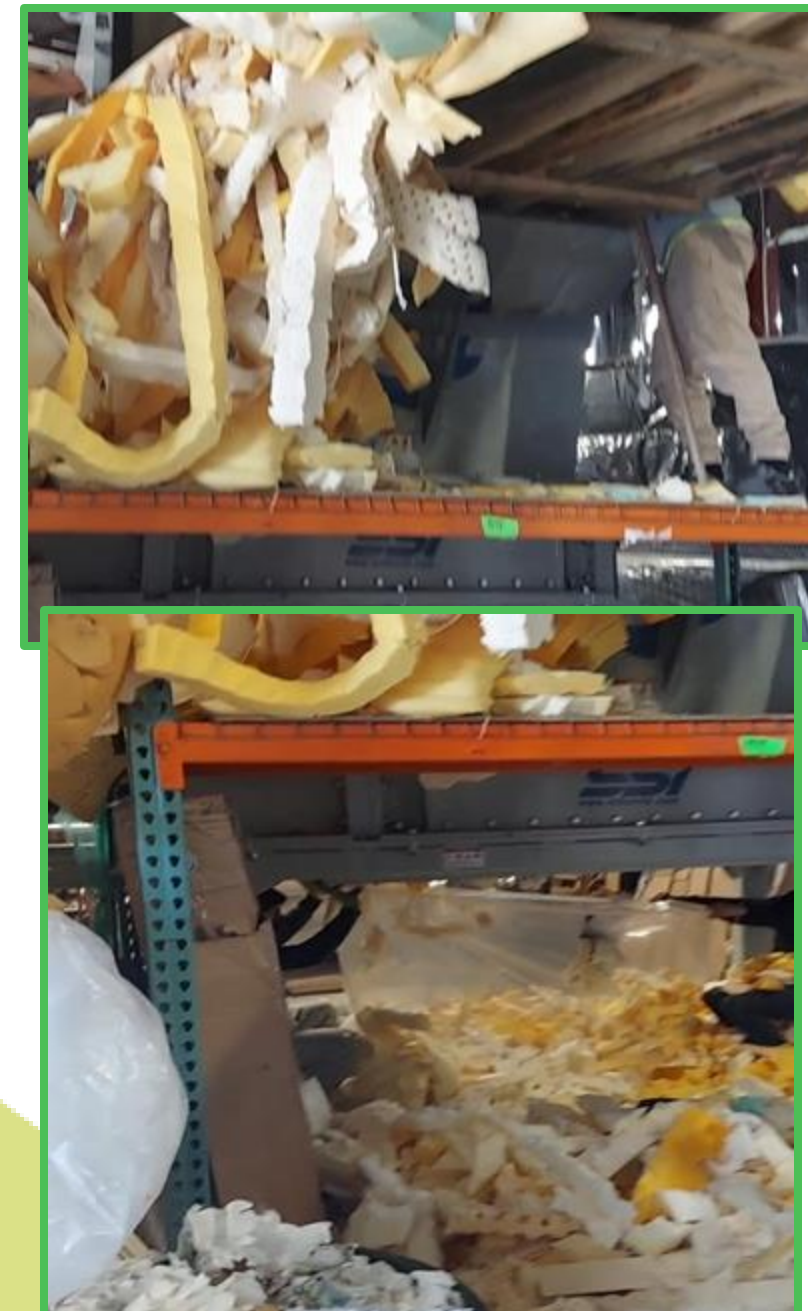
Borgata Hotel, Casino & Spa

4.75 tons collected!





RRI's Mattress Collection & Recycling Process for Municipalities



*Photo illustration Locations- Collection: Burlington County Resource Recovery Complex Burlington, NJ & Old Bridge Township Recycling Center, NJ
Recycling Process: RRI Recycling Facility Oceanside, NY*



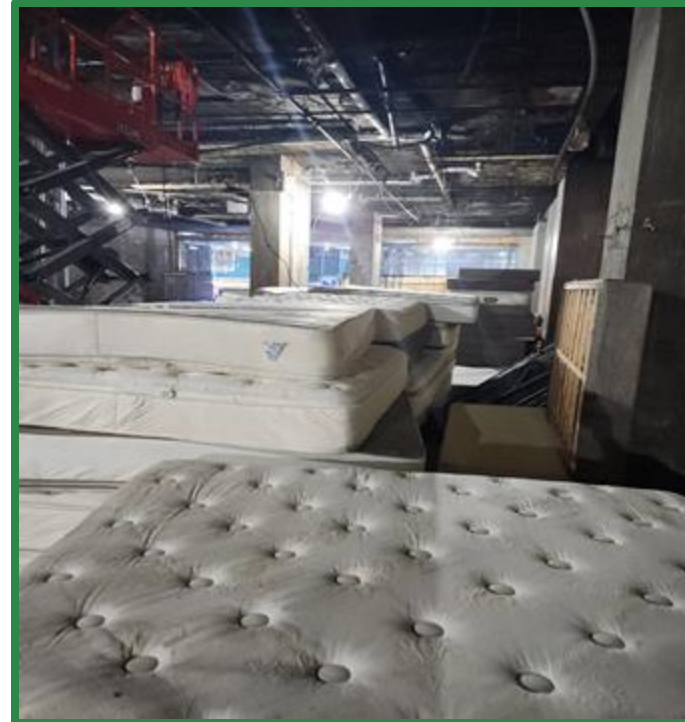
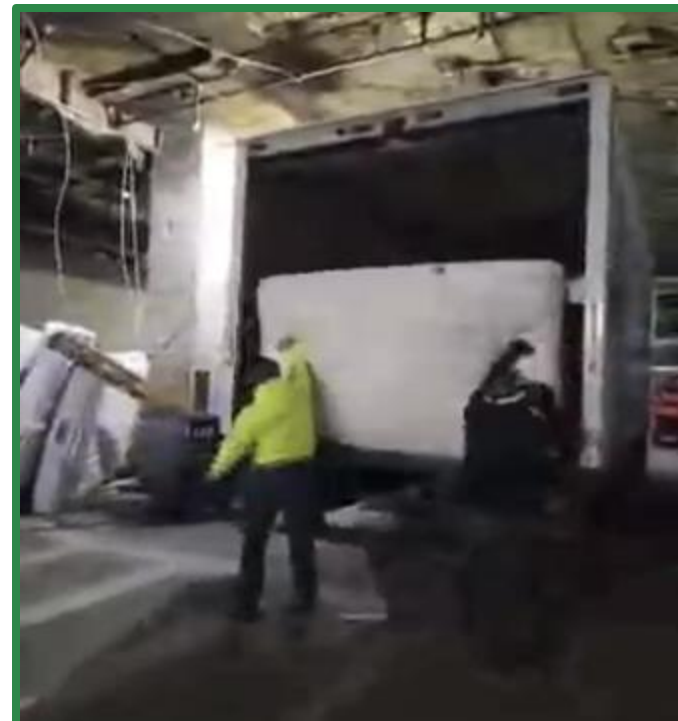
RRI & HIGHGATE HOTEL GROUP

Removal & Recycling of 2,607 Mattresses + Box Springs !

**RRI Team Arrives &
Collects Mattress Units
From Interior of Hotel**

• *Project: Hyatt Regency Times Square*

• *January-February 2025*



**RRI Team Processes
Mattress Textiles
For Recycle & Reuse!**





SAMPLE LANDFILL DIVERSION REPORTING

MATTRESS TEXTILES COLLECTED FROM HYATT REGENCY
HOTEL CLEAN OUT PROJECT

TOTAL DIVERTED FROM
LANDFILLS:

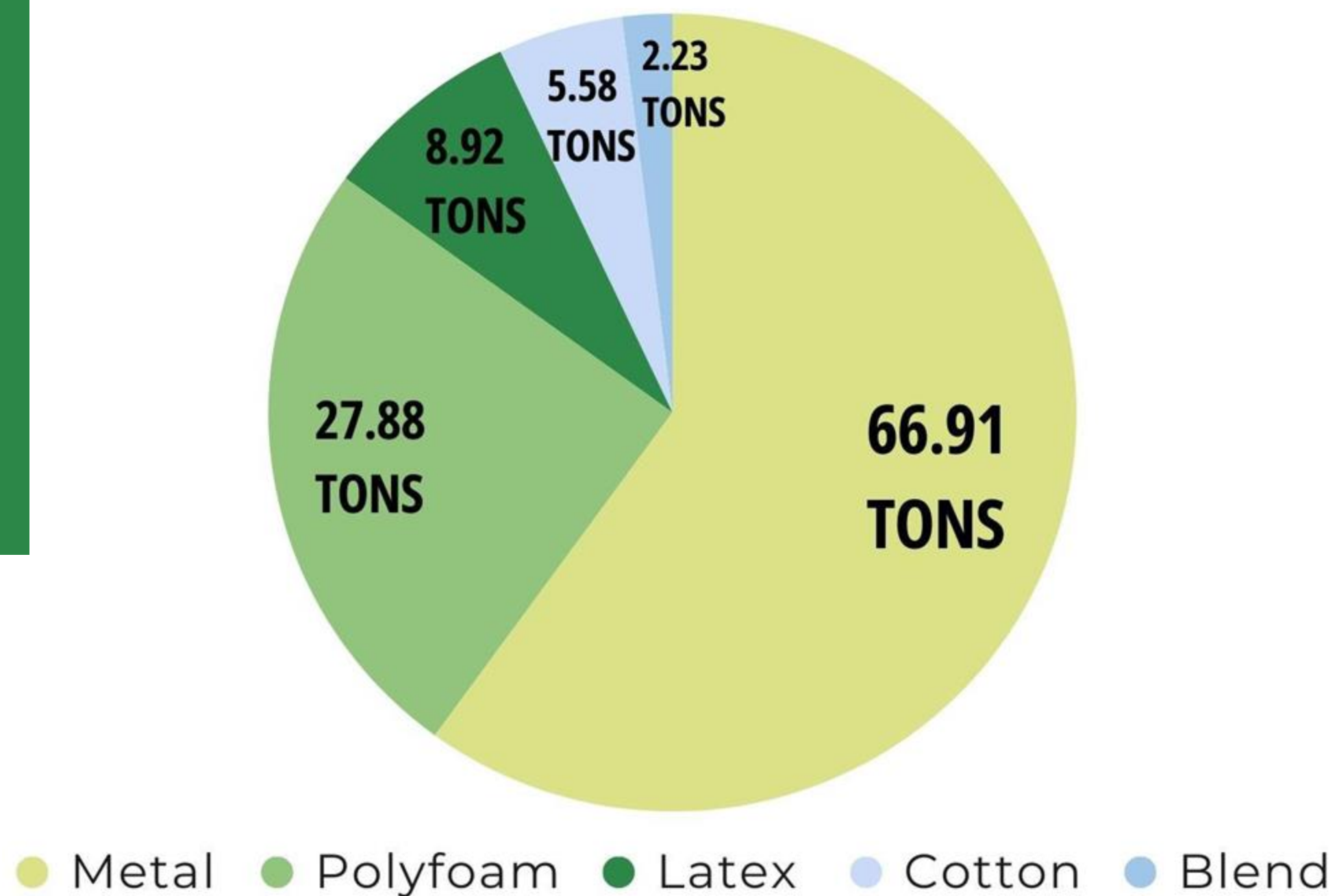
111.51 TONS!

TEXTILE COLLECTION:

- Hyatt Regency Times Square
135 W 45th St, New York, NY
- Jan- Feb 2025 Reporting



HIGHGATE





**MANUAL &
AUTOMATED
Processing**



MULCH



UNDER CARPET
PADDING



LAMP
POSTS



PARK
BENCHES



**Repurposed
Materials- to-
End Product!**



BEYOND MATTRESSES

**** AS OF 2024, RRI ACCEPTS CARPET, METALS, FLOORING, ACOUSTIC CEILING TEXTILES & MORE! ****

Materials include but are not limited to:

SILK - NYLON - POLYESTER - OLEFIN - MINERAL FIBERS





MATERIALS INSIDE OF CARPETS

**UP TO 90% OF
CARPET CAN BE
RECYCLED**



Types of carpet fibers



Polyester (P.E.T)



Nylon



Natural Wool



Polypropylene (Olefin)



Triexta, Sorona, and
SmartStrand



**UNDER CARPET
PADDING IS
COMPRISED OF
UP TO 85%
RECYCLED
MATERIALS**



RE-THINKING RE-USE FOR A CIRCULAR ECONOMY

PARTNERSHIP WITH **Reworld**

- North America's Premier Waste-To-Energy plant
- Breakthrough technology in transforming MSW into electric energy
- Up to 9% of RRI's recycling waste is processed

RRI Boasts up to 99% Recycling Rate!

RRI's Innovative Re-Use Products

- **Sustainable Sandbags**
 - 40 % recycled textiles: 60 % sand
 - Proprietary blend allows for 3X the amount of moisture absorption
 - Lasts over 4,000 hours
- **Blow In Insulation**
 - 65 % recycled textiles | 35 % filler
 - Market standard in density & safety
 - Final phase of Federal Standard Testing



STEP 2:
MSW
Collection



STEP 3:
Materials
Processing



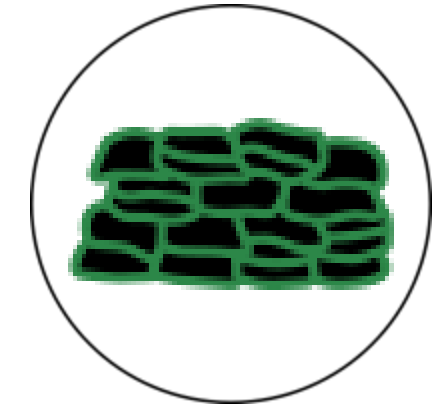
STEP 4:
Textiles
Baled for
Recycling



STEP 1:
Recycling
Program



STEP 7:
Landfill
Diversion Reporting



STEP 6:
RRI's Proprietary
End Products



STEP 5:
Recovery of 10%
Recycled
Materials to
Electric Energy



**UP TO 90%
RECYCLING
RATE**

**UP TO 9%
RECOVERY
RATE**



RRI'S CIRCULAR ECONOMY



STEP 1:
Recycling
Program



STEP 2:
MSW
Collection



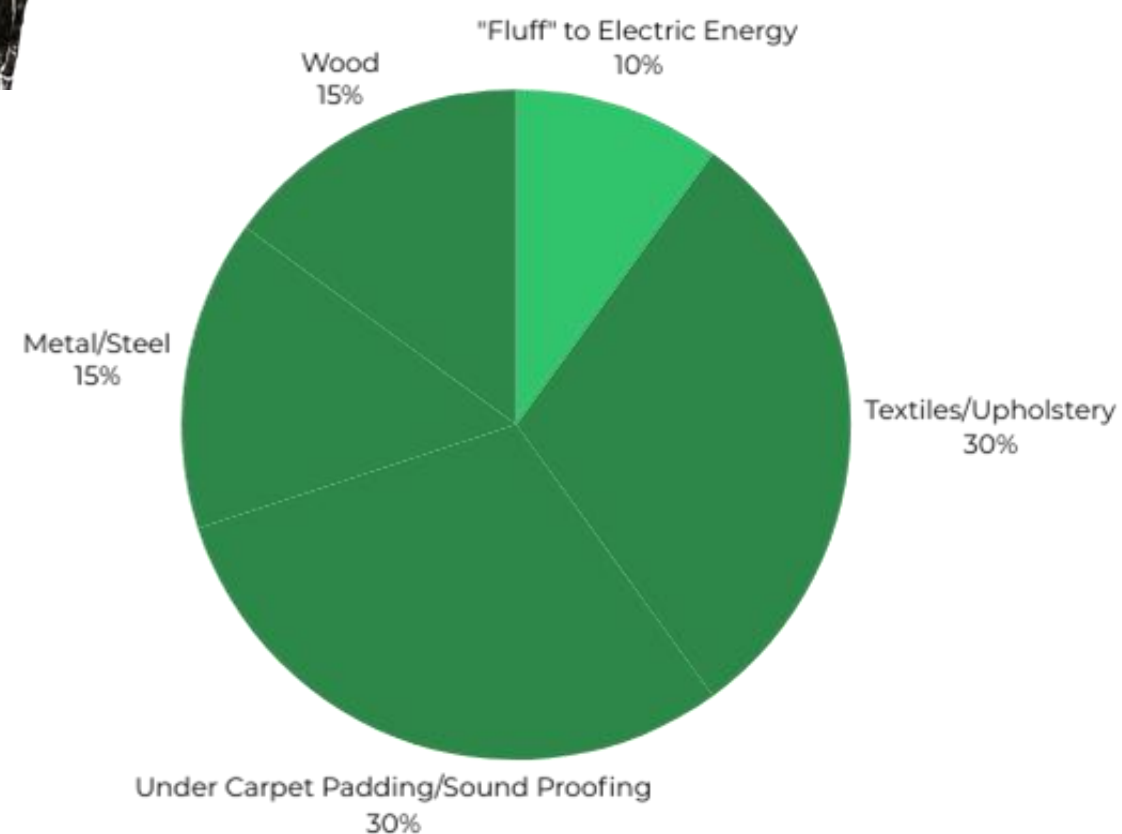
STEP 3:
Materials
Processing



STEP 4:
Textiles
Baled for
Recycling

**UP TO 90%
RECYCLING
RATE**

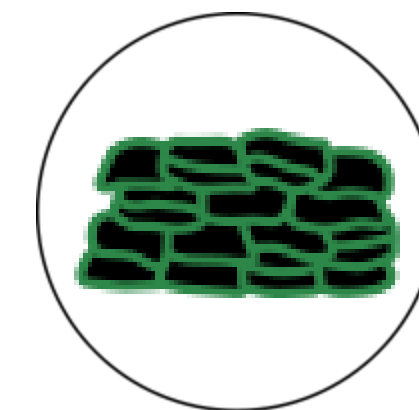




**UP TO 9%
RECOVERY
RATE**



STEP 7:
Landfill
Diversion Reporting



*Sustainable
Sandbags !*

STEP 6:
RRI's Proprietary
End Products



*Blow In
Insulation !*

STEP 5:
Recovery of up to
10% Recycled
Materials to Electric
Energy





CARBON REDUCTION PROGRAM

**Landfill Material Reduction
+
Transportation Emissions
Reduction
=
Carbon Credit!**

- Methodology validated utilizing New York City Housing Authority (NYCHA) Mattress Recycling Program Statistics
- Recognized for Carbon Reduction/Zero Waste Initiatives and Reporting



**Verified Carbon
Standard**

Gold Standard

Climate Security & Sustainable Development



CARBON REDUCTION PROGRAM

**Each tonne of CO₂
reduced generates 1
Carbon Credit**

Approximately **190 mattresses**
= **10 tons** of textiles/metal



**Verified Carbon
Standard**

Gold Standard

Climate Security & Sustainable Development



NYCHA'S CARBON CREDIT PROGRAM

28,680 Mattresses Collected =

**1,595 tons of Municipal Solid Waste
Diverted From Landfills & Repurposed=**

151 Tonnes of CO2 Carbon Footprint Reduced!

*Above Statistics Extrapolated from NYCHA's Contracted Mattress Recycling Program with Renewable Recycling, Inc.
Active Mattress Recycling Program Spans Over 52 Developments, throughout All 5 NYC Boroughs
2021-2024*



CLEANER FOOTPRINT = CLEANER EARTH





CONTACT

CHRISTINE KIOURTSIS - CEO/PRESIDENT

CHRISTINE@RENEWABLERECYCLING.COM

917 - 541 - 6971

<https://renewablerecycling.com/>

NYSAR3:

<https://www.nysar3.org/>

